



6/323 Alfred Street North NEUTRAL BAY NSW

1 1

WALK TO NORTH SYDNEY CBD

Situated in a quiet but very convenient position, you can walk to all North Sydney has to offer! Features include a large bedroom with built in wardrobe, good size combined lounge/dining, modern gas kitchen and a modern bathroom with laundry facilities.

COME AND MAKE ME YOURS. YOU'LL LOVE LIVING HERE.

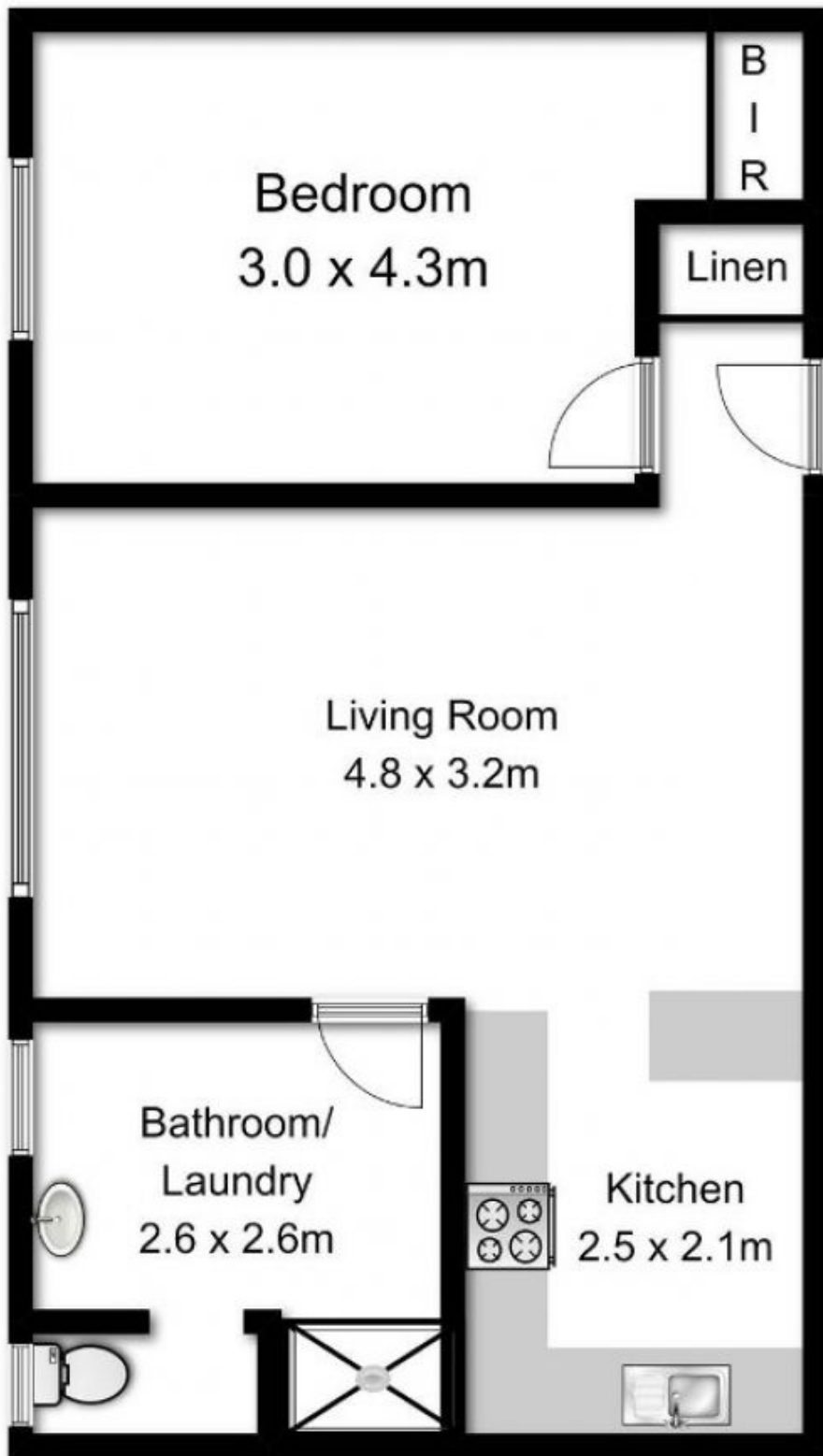
AVAILABLE 24TH JUNE 2017

View : <https://www.oneagencyhazlettpoole.com.au/lease/nsw/north-shore-lower/neutral-bay/residential/unit/7921736>



Robyn Hazlett-Poole
02 8038 1200

6/323 Alfred Street North, Neutral Bay



Measurements are approximate. Not to scale. Illustrative purposes only
Open2view does not take any responsibility for any information supplied