



11/103 Pitt Road NORTH CURL CURL NSW

1 1 1

On the top floor of a boutique low-rise block just a few minutes drive from the beach, this desirably east facing apartment in Victoria Court is ready to enjoy now and offers value add potential in a premium coastal setting. Well-presented interiors are bathed in natural light from the east and flow to a lengthy sundrenched balcony, with undercover parking and easy access to village shops, cafes, leading schools and transport providing further enticement for first home buyers or investors.

Positioned back in established solid brick block of only 17 apartments

East facing interiors and generous balcony with unobstructed outlook

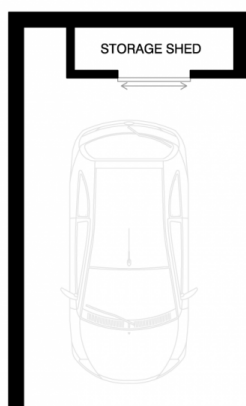
Bright living and dining space has wide sliding glass doors onto balcony

Large updated kitchen and good sized bathroom including

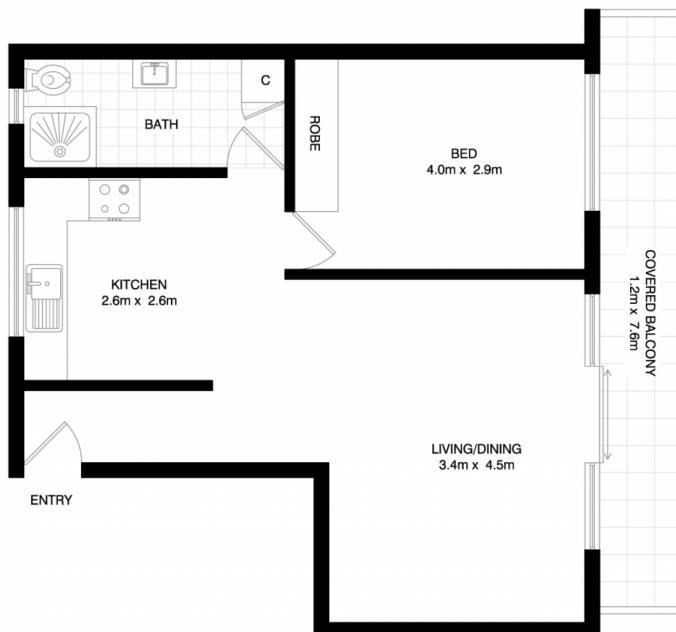
View : <https://www.oneagencyhazlettpoole.com.au/sale/nsw/northern-beaches/north-curl-curl/residential/unit/7921854>



Robyn Hazlett-Poole
02 8038 1200



CAR PORT
2.7m x 4.6m



NORTH CURL CURL

11/103 PITT ROAD

*INTERNAL FLOOR AREA APPROX 51m²



*PLANS SHOWN ONLY INDICATIVE OF LAYOUT. DIMENSIONS ARE APPROXIMATE.

Floor plan supplied by V-Mark Design Pty Ltd. This floor plan is provided for indicative purposes only.

Measurements are approximate and not to scale. The vendor, agency and supplier will accept no liability for its accuracy. Interested parties are advised to make their own independent enquiries.

ONEAGENCY
HAZLETT & POOLE